



Activity: Parts of a Flower

4-H Pillar: STEM

Supplies: Blank paper or use worksheet on last page.
Pencil
Tape
Flower (Azaleas or lilies work very well if available in your yard)

Age or Grade: Ages 8-12+ (specifically targets 5th grade SOLs)

Time: 15-20 minutes

Background: A flower is the reproductive part of a plant. It plays an important role in making seeds. Some flowers have both male and female parts, and some have only one type. Flowers come in many shapes, sizes and colors, but they all have mostly the same structure.

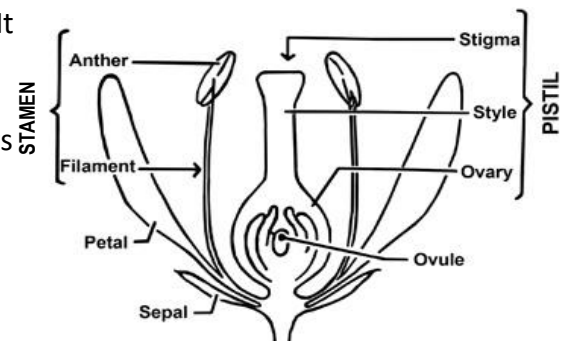


Image from extension.uga.edu
https://secure.caes.uga.edu/extension/publications/files/pdf/B%20670_5.PDF

- The **sepal** is actually a specialized petal that protects the flower when it is a bud.
- The **petals** are the colorful part of the flower that attracts the pollinators.
- The **stamen** is the male part of the flower. There are usually several of these, often the same as the number of petals. The stamen produces pollen. It is made up of the anther and filament. The **anther** makes and holds the pollen. It sits on a thin stalk called the **filament**.
- The female part of the flower is called the **pistil**. It is made up of the stigma, style, and ovary. The **stigma** is a sticky part in the center of the flower that holds pollen grains when they rub off of the pollinators. The stigma sits on a hollow tube known as the **style** that links the pollen to the ovary. The **ovary** contains **ovules** which will become seeds.

Project Goal: Investigate and identify the parts of a flower.

**What to Do:**

1. Collect a couple flowers from the yard. You may want two or three of the same type of flower, and they should be big enough that you can separate the parts.
2. Look for a greenish/yellowish part at the base of the flower that resembles a small leaf. Carefully remove it and tape it to your paper, labeling it.
3. Do the same for each of the parts of the flower listed in the background section.

Reflect:

1. Share with someone at home (or a friend over the phone or other media) what you did and what you learned.
2. What were the most and least difficult parts of this activity?
3. What surprised you in this activity?
4. What other activities have you done similar to identifying and labeling the parts of a flower?

Apply:

1. What did you learn about yourself through this activity?
2. Depending on the flower you chose, this may have been fairly straightforward, or it may have posed some challenges. When else in life could something be easier for some and harder for others? What can we learn from that?

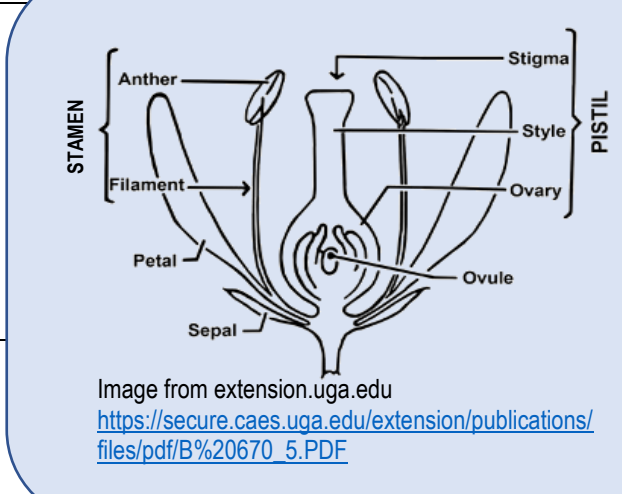
**Notes for
Parents or
Helpers:**

A video supporting this activity can be found at
https://video.vt.edu/media/parts+of+a+flower/1_l6qj3fqh



Parts of a Flower

Tape each part in the chart below:

Sepal	 <p>Image from extension.uga.edu https://secure.caes.uga.edu/extension/publications/files/pdf/B%20670_5.PDF</p>		
Petal			
Pistil	Stigma	Style	Ovary
Stamen	Anther	Filament	Pollen (if possible)