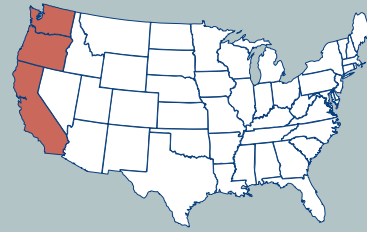


The Effects of Regulations on the U.S. Shellfish Industry



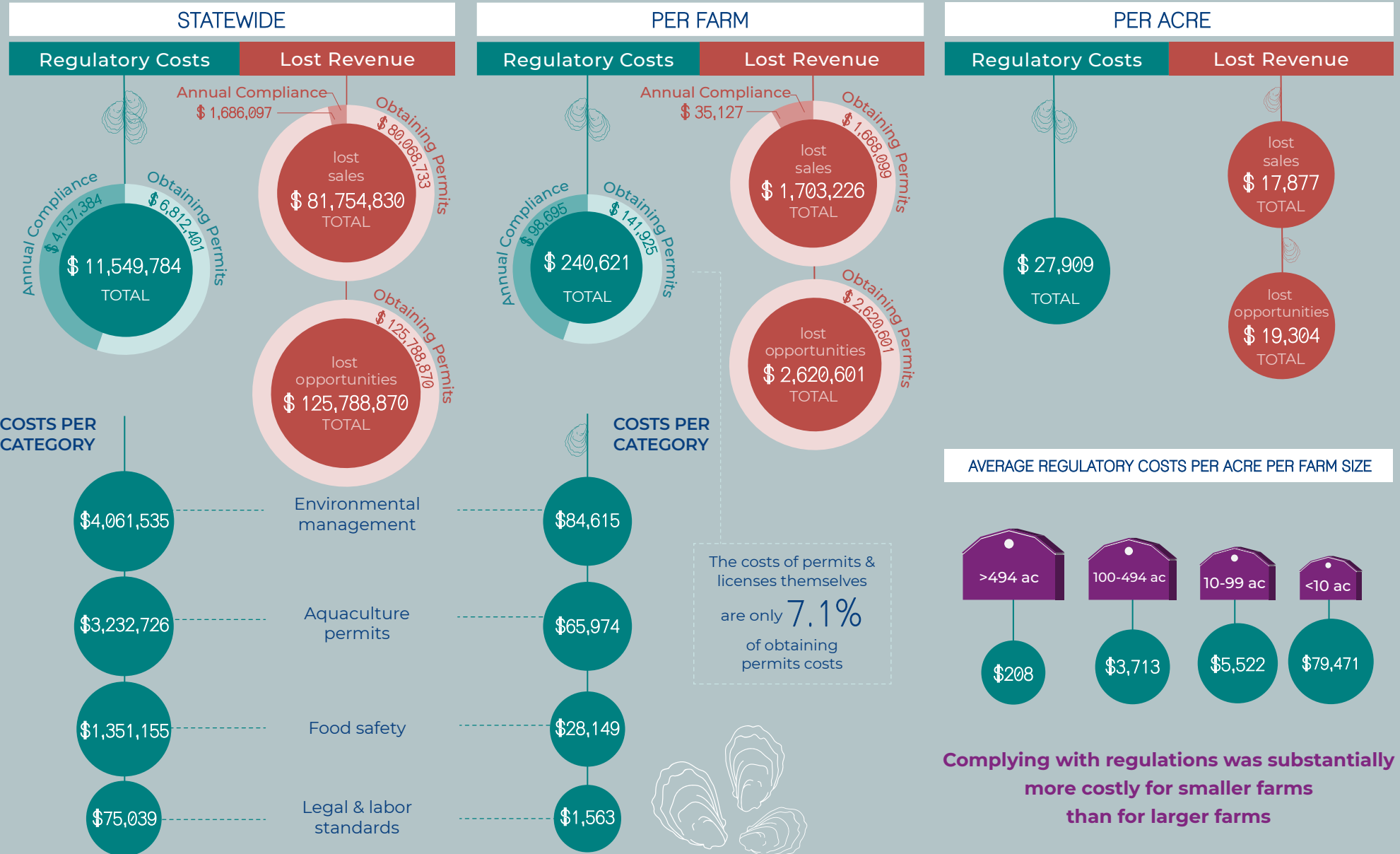
For more information check the scientific article by van Senten et al. (2020) Aquacult. Econ. Manag.

AAEC-285NP | VSG-21-10

Design by Scite® – Science Crunchers



Pacific Coast Findings





Fred S. Conte, Ph.D.
(1940 - 2021)

We want to acknowledge Dr. Conte's contributions to this project and to the broader field of U.S. aquaculture research and extension. Dr. Conte was a driving force behind the development of this project to assess the effects of regulation at the farm level on the Pacific coast. His knowledge and insights of the aquaculture industry were invaluable to the successful completion of this project. Throughout his 43 years of service to Cooperative Extension, Dr. Conte left his mark on U.S. aquaculture, working to advance industry through applied research and outreach initiatives.

Dr. Conte's record of impact and the relationships he built throughout his career will continue to serve as an inspiration for others.