

# Household Water Quality

## Campbell County 2009-2017

The Virginia Household Water Quality Program provides affordable water testing and education through local Extension offices to the 1.7 million Virginians who rely on wells, springs or cisterns for their household water supply.

Visit us online!



## What's in your water?

Municipal water supplies are regulated under the Safe Drinking Water Act, which mandates routine testing and treatment. Maintenance and testing of private water supplies (wells, springs and cisterns) is the responsibility of the owner. Virginia Cooperative Extension offers water testing and education for private water supply users across the state

Drinking water clinics are held in county Extension offices each year. Here's how it works:

### #1 Kickoff Meeting

Participation is voluntary and open to anyone with a well, spring or cistern. Participants pick up a sample kit and receive instructions about how to collect the samples from their household tap and where and when to drop off their samples.

### #2 Sampling

Following directions carefully, participants collect their samples and complete a short questionnaire. Samples are dropped off locally, so shipping is unnecessary. We coordinate getting the samples to Virginia Tech's campus for analysis.

### #3 Analysis

Samples are analyzed for total coliform and E. coli bacteria, nitrate, lead, copper, arsenic, fluoride, sodium, hardness, iron, manganese, total dissolved solids, pH, and sulfate. The cost for one sample kit in 2017 was \$55. Confidential results are prepared and returned to the Extension office.

### #4 Results

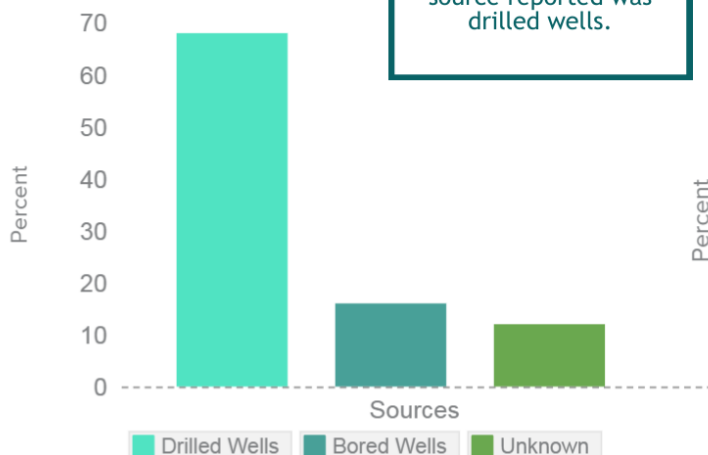
Results are returned to participants and explained at a local interpretation meeting. Information is provided about addressing water quality problems, routine care, and maintenance of private water supplies.

## Water Systems in Campbell County (2009- 2017)

73 samples analyzed  
Serving 148 people  
Well depth: 0-540 feet  
Well age: 1-82 years

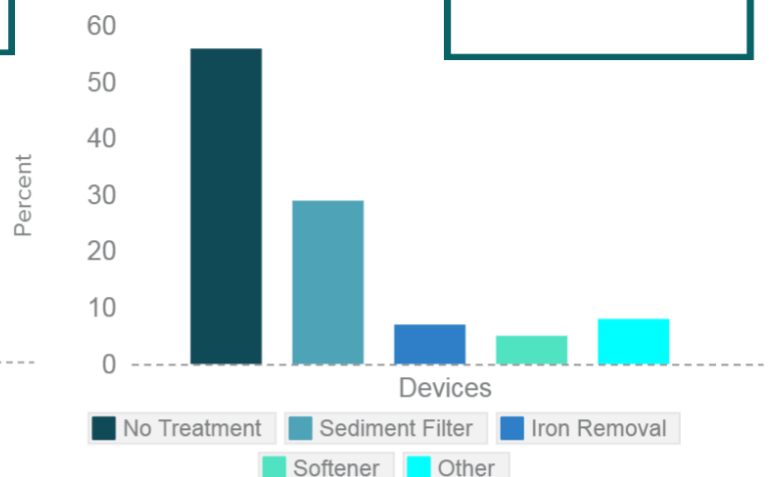
### Systems

Twelve percent of participants did not know what type of system they had. The most common source reported was drilled wells.



### Treatment

44% of participants reported having treatment installed. The most common device was a sediment filter.



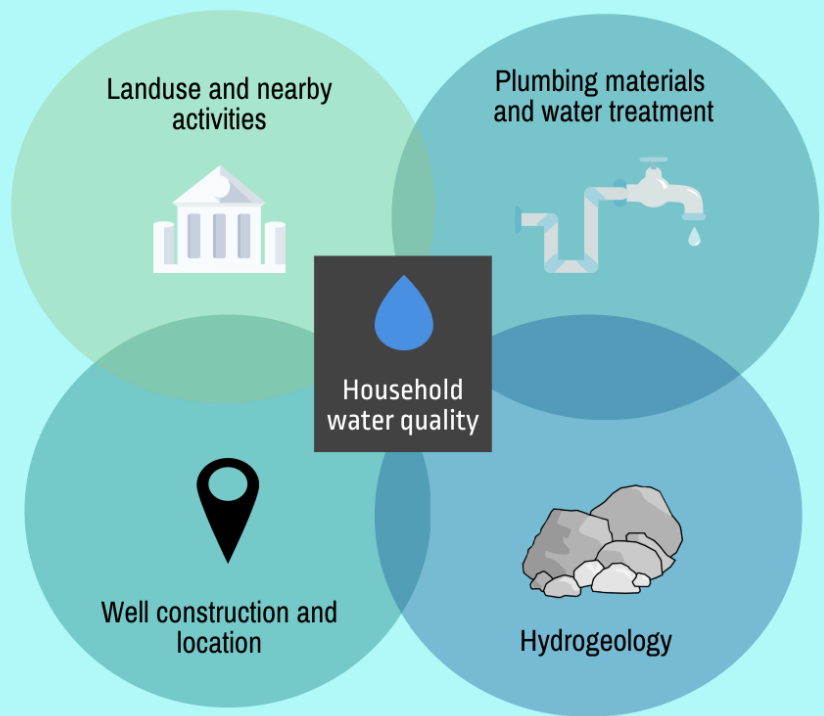
## Where do contaminants come from?

Contaminants in water may be health-related (e.g., bacteria) or a nuisance (e.g., hardness causing scale) and can come from a variety of sources.

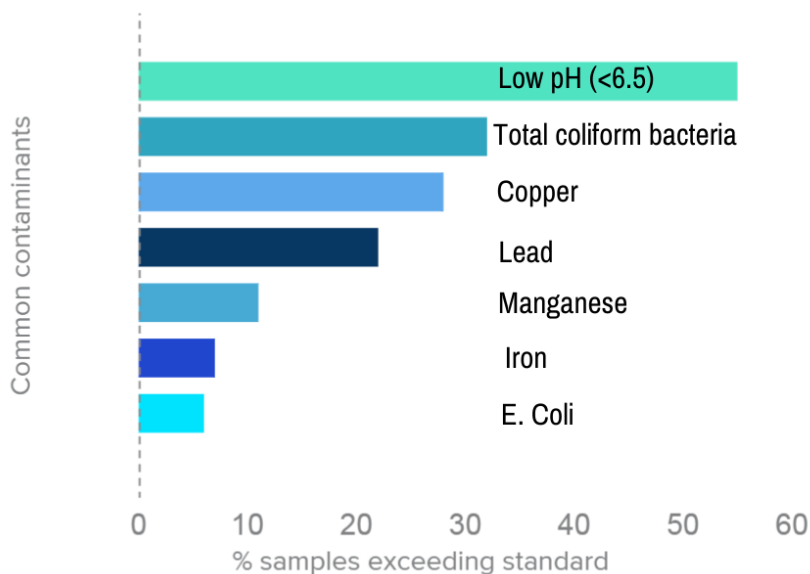
Some contaminants originate from geology, the sediment or rock where the water is stored. Others are a result of land usage or activities on the earth's surface, such as lawn fertilizer, animal waste, or chemical spills.

Proper construction of a well can protect household water quality by preventing surface water, which may carry many contaminants, from entering the groundwater supply. Wells should be constructed with proper casing, grout seal, and a sealed well cap. Contamination sources, such as livestock and septic systems should be at least 50 feet away from the well head.

Treatment devices and plumbing components can also influence water quality by adding contaminants or changing water chemistry.



## Household water quality in Campbell County: Common Contaminants



The most common contaminants found in household water in Campbell County were total coliform bacteria, low pH, lead, iron, copper, manganese and E. Coli.

Low pH (<6.5) can occur naturally in parts of Virginia geology. pH below 6.5 was found in 55% of samples. Although not a concern in itself, low pH can be a driver of how corrosive the water is. Once the water enters the house it can result in metals such as copper and lead leaching into the water from plumbing components that contain these metals, such as brass fittings or copper pipes.

Total coliform bacteria presence is an indication that surface water may be entering a well and other more harmful microorganisms may be present. Total coliform was found in 32% of the Campbell County samples. E. coli were found in 6% of the samples and are a sign that human or animal waste is entering the water supply.

Iron and manganese are considered nuisance contaminants and can cause staining and a metallic taste.

For more information about other common contaminants, please visit our Resources Page.

Special thanks to the residents of Campbell County who participated in the Virginia Household Water Quality Program drinking water clinics. Extension agent Todd Scott, among other partners, were instrumental in the program's success.

Virginia Household Water Quality Program  
 Email: [wellwater@vt.edu](mailto:wellwater@vt.edu)  
 Ph: 540-231-9058



**Virginia Cooperative Extension**  
 Virginia Tech • Virginia State University

[www.wellwater.bse.vt.edu](http://www.wellwater.bse.vt.edu)

[www.ext.vt.edu](http://www.ext.vt.edu)

Virginia Cooperative Extension programs and employment are open to all, regardless of age, color, disability, gender, gender identity, gender expression, national origin, political affiliation, race, religion, sexual orientation, genetic information, veteran status, or any other basis protected by law. An equal opportunity/affirmative action employer. Issued in furtherance of Cooperative Extension work, Virginia Polytechnic Institute and State University, Virginia State University, and the U.S. Department of Agriculture cooperating. Edwin J. Jones, Director, Virginia Cooperative Extension, Virginia Tech, Blacksburg; Jewel E. Hairston, Administrator, 1890 Extension Program, Virginia State, Petersburg.